



Weekly Construction Progress Report

Morningside Elementary School

Week Ending: 06/10/2022

THIS WEEK

- Painting continuing in the new building
- Fire sprinkler installation continuing in Area C
- Mechanical, Electrical, and Plumbing rough-in continuing in the new addition
- Lighting installation continuing in new building
- Storefront framing and glazing installation continuing
- Plumbing fixture installation continuing in the existing building
- Flooring installation continuing in the existing building
- Interior handrail installation continuing
- Kitchen equipment installation continuing
- Casework installation continuing
- Metal wall panel installation continuing
- Cast stone installation finishing
- Sidewalk installation continuing
- Concrete seat wall continuing
- Ceiling tile installation at addition

NEXT WEEK: 06.13.22 – 06.17.22

- Painting finishing in the new building
- Fire sprinkler installation continuing in Area C
- Mechanical, Electrical, and Plumbing rough-in continuing in the new addition
- Lighting installation continuing in new building
- Storefront framing and glazing installation continuing
- Plumbing fixture installation continuing in the existing building
- Flooring installation continuing in the existing building
- Interior handrail installation continuing
- Kitchen equipment installation continuing
- Casework installation continuing
- Metal wall panel installation continuing
- Sidewalk installation continuing
- Concrete seat wall continuing

BUDGET/SCHEDULE

Construction Budget

\$17,600,000.00

Budget Status

\$14,844,507.37

Substantial Completion:

July 25, 2022

Schedule Status:

On Schedule

Completed By:

Chris Hubbard

PARRISH
CONSTRUCTION GROUP

Photo/Activity Updates

Sidewalk install

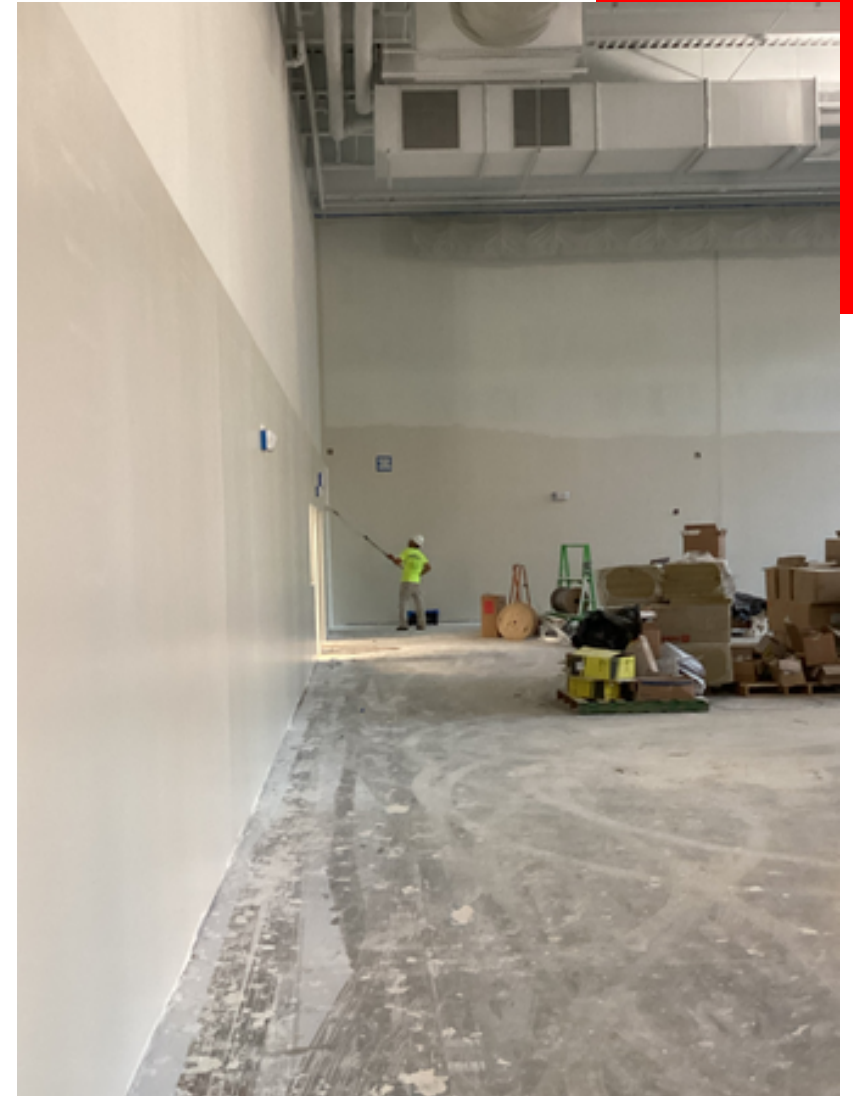


Fire alarm system install



Photo/Activity Updates

Seat wall installation



Interior painting at gym



Photo/Activity Updates

Metal wall panel installation



Curtain wall at bridge installed



Photo/Activity Updates

Pavement installation



Drywall finishing

